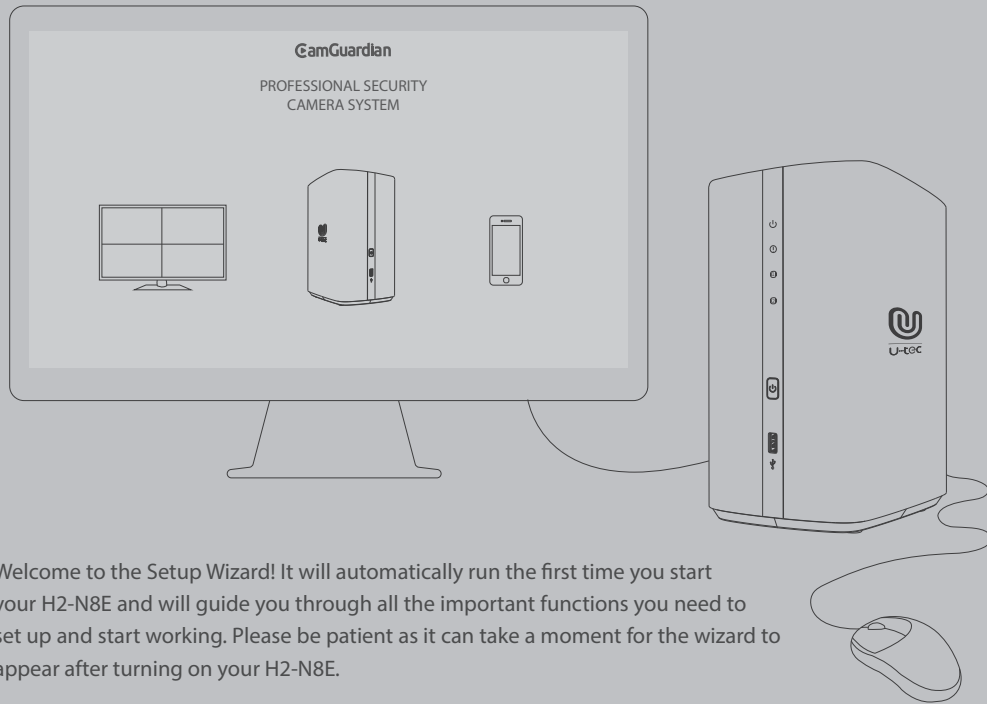


# CamGuardian

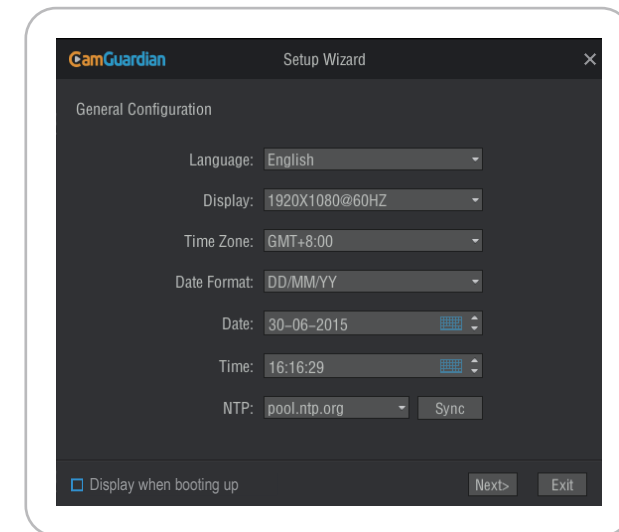
## Setup Wizard (v1.3)

UCG-H2N8E4A2/UCG-H2N8E4B2



Welcome to the Setup Wizard! It will automatically run the first time you start your H2-N8E and will guide you through all the important functions you need to set up and start working. Please be patient as it can take a moment for the wizard to appear after turning on your H2-N8E.

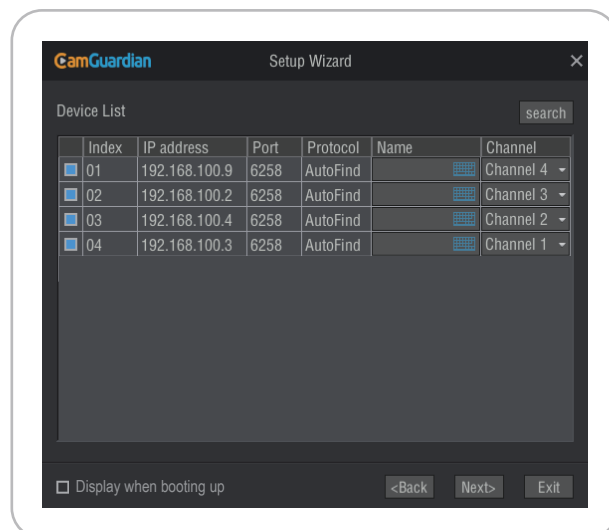
## General Configuration



- Language: Choose the language you would like the menu system to be displayed in.
- Display: Determine the number of pixels the H2-N8E will output.
- Time Zone: Select the time zone you are in.
- Date Format: Choose how you would like the date to be displayed.
- Date: Choose the date.
- Time: Choose the time.
- NTP: Stands for "Network Time Protocol". It is a way for the H2-N8E to connect to the internet and automatically updates and maintains accurate times. Basic users only need to click the "Sync" button to synchronize the time.

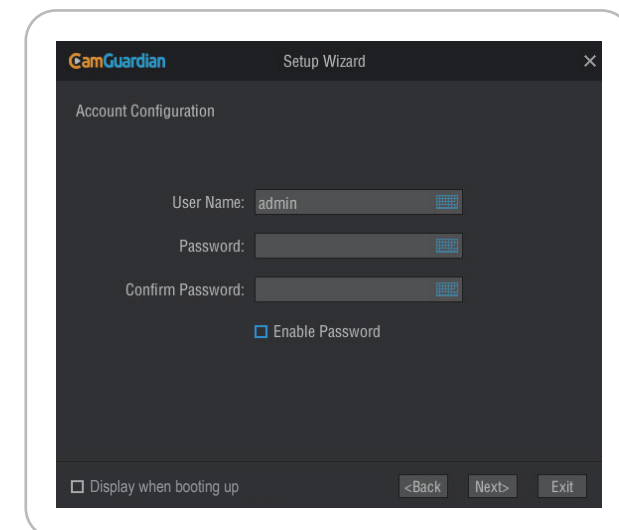
Click "Next" to continue.

## Camera Configuration



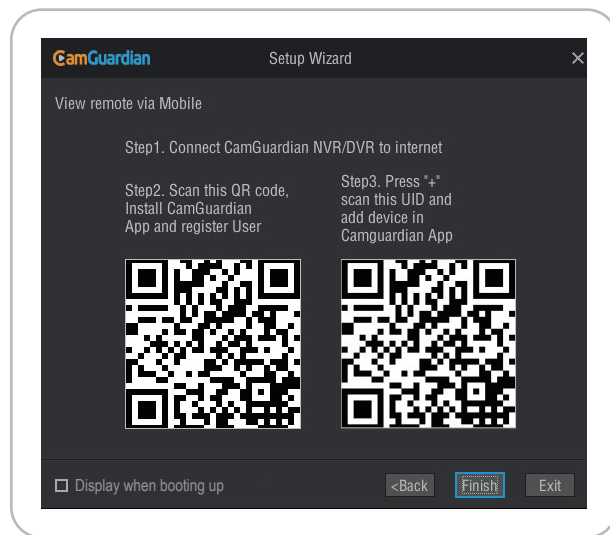
The Camera List contains the information of all cameras connected to the network. Click "Search" to find the cameras in the network and click the check box. If you wish to name the camera, simply click on the space in the "Name" category. Click "Next" to continue.

## Account Configuration



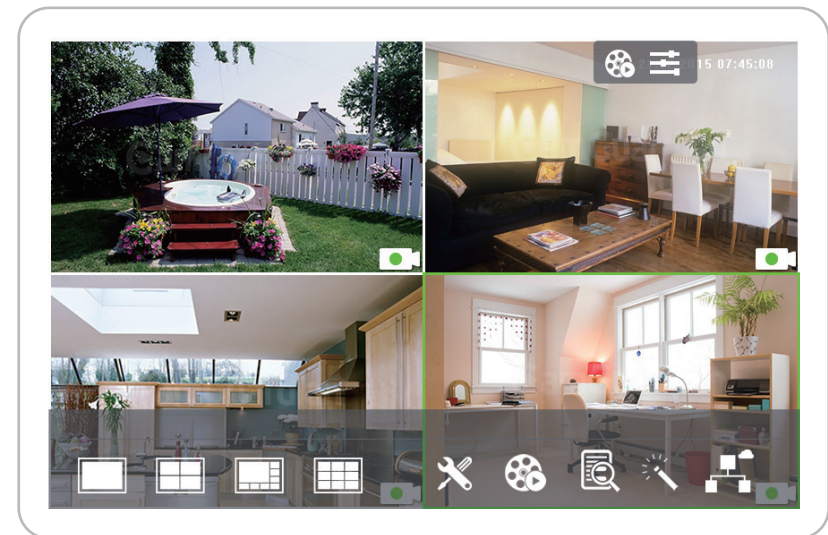
In this screen you are able to change the default password. To guard against unauthorized access, we recommend creating a new password for your Admin account. The password can be between 1 and 15 numbers, letters and/or symbols. Once a password has been entered, it must be re-entered in the space marked as "Confirm Password". Select "Enable Password" if you would like to be prompted for the user account's password when accessing the main menu. Click "Next" to continue.

## Setting up on Mobile Device



- Step 1: Connect CamGuardian H2-N8E to the internet.  
Step 2: Scan the QR code, install the CamGuardian APP and register the User.  
Step 3: Press "+" to scan the UID code and add the device in CamGuardian APP.  
Click "Finish" to complete the Setup Wizard.  
Shortly you will see all connected cameras displayed on the Live View screen.  
You can also find those QR codes on the back of H2-N8E.

## Live View Mode



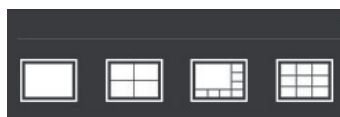
Live View is the default display mode for the CamGuardian. All connected cameras are displayed on this screen. You can check the status or operation of your H2-N8E and cameras using the icons and Menu Bar on the Live View screen.

5

6

## Menu Bar

The camera toolbar at the bottom of the screen houses several icons that provide different functions. These icons will help you navigate your way around the CamGuardian's functions.



**Screen Views:**  
These icons provide the option for the user to divide the screen into multiple viewing windows. They can be partitioned into one /four /eight/nine viewing widows. Each image shows a view from one camera.



**Main Menu Icon:** Clicking on this icon will open the main menu.



**Playback Icon:** Use this icon to view previously recorded material.



**Maintain Icon:** It displays device system information, including the device model, serial number, software version, release date, etc.



**Setup Wizard Icon:** Click this icon in order to access the Setup Wizard.

**Network Status Icon:** This icon informs you if you are currently connected to the internet or not.



Cable not connected



Cable connected but not connect to Internet



Connected to cloud server



Connected to Internet but not connect to cloud server

## Status Icons



This camera icon indicates that the camera is currently recording. The color of the dot in the middle of the icon indicates the different state of the recording. The blue color indicates normal recording throughout the day. The green color indicates the timing recording. The red color indicates the alarm recording. The yellow color indicates the motion detecting recording. The orange colors indicate the alarm & motion detecting recording.



This icon indicates that the channel displaying this has lost the feed from its camera. This may be caused by a disconnected/damaged cable, the camera may have lost power or been deregistered from the channel, or the video standard may be wrong (PAL/NTSC).



This icon allows you to view previously recorded material. This icon is different from the playback in the main toolbar in that it will only playback for the camera if it is situated in.



This icon allows users to adjust the overall image of the picture, including shading, contrast, etc.



U-tec and CamGuardian brands and products are trademarked and protected under law in the United States. Unauthorized use is prohibited.  
CamGuardian is sub-brand of U-tec Group Inc.

7

8